

PROPRIETARY INFORMATION: PROPRIETARY OF GLOBTEK, INC. ANY REPRODUCTION, DISCLOSURE OR USE OF THIS DRAWING, IN WHOLE OR IN PART, IS HEREBY PROHIBITED EXCEPT AS SPECIFIED IN WRITING BY GLOBTEK, INC.	REVISION			
	REV	DESCRIPTION	DATE	APPROVED
	A	INITIAL RELEASE, RFS.4638, SP	09/29/04	DMR
	B	UPDATE V _o TOLER., ADD C-TICK, CORRECT LABEL, RFS.4942, DMR	11/11/04	DMR
	C	UPDATE O/P CORD CONNECTOR, RFS.5178, SP	12/16/04	DMR
	D	UPDATE LABEL , RFS.6730, GC	07/25/05	DMR
	E	UPDATE PACKING, ADD ROHS, RFS.7634, MS	12/23/05	DMR
	F	REMOVE EFFICIENCY FROM LABEL, O/P CORD#1185, RFS.7773, DMR	01/19/06	DMR
	G	ADD CH. ROHS, UPDATE LABEL, RFS.11446, MS	06/28/07	HM

1. NOTES:

DIMENSIONS ARE IN MM UNLESS SPECIFIED OTHERWISE.

2. ELECTRICAL SPECIFICATIONS:

INPUT VOLTAGE:	100-240 VAC
INPUT CURRENT:	< 0.6 A RMS MAX
INPUT FREQUENCY:	47 - 63 HZ
OUTPUT VOLTAGE:	5 VDC, NO LOAD TO FULL LOAD, NO MINIMUM LOAD REQUIRED
OUTPUT CURRENT:	2.6 A
OUTPUT POWER (RATED):	13 WATTS MAX
SWITCHING FREQUENCY	
OUTPUT RIPPLE (PEAK TO PEAK):	150 mV
OUTPUT REGULATION (LINE/LOAD):	± 5 % FOR MAIN OUTPUT, MEASURED AT O/P CONNECTOR
LINE REGULATION:	± 1 % MAX AT FULL LOAD
TURN ON/ TURN OFF OVERSHOOT:	4% MAX 500uS MAX RECOVERY TIME FOR 25% STEP LOAD
TURN-ON DELAY:	3000 mSEC MAX
HOLD-UP TIME:	16 mSEC MIN AT NOMINAL INPUT AND FULL LOAD
INRUSH CURRENT:	30 A MAX AT COLD START 120 VAC, 60A MAX COLD START 230VAC
SWITCHING FREQUENCY:	66.5 KHz TYPICAL
OVER-VOLTAGE PROTECTION:	VOLTAGE LIMITED LESS 130% OF NOMINAL VOLTAGE
OVER-CURRENT / SHORT CIRCUIT:	HICCUP WITH AUTO RECOVERY TO 1.1 - 1.3 I _o
OTHER PROTECTION:	INPUT FUSING
SAFETY APPROVALS:	UL60950, CUL TO 22.2# 950, DEMKO TO EN60950, CCC TO GB4943-2001, GB9254-1998, GB17625.1-2003, CE CLASS II, AS/NZ 60950, PSE TO J60950, CB REPORT
DIELECTRIC WITHSTAND VOLTAGE:	3000VAC PRIMARY-SECONDARY
LEAKAGE CURRENT:	≤ 0.25 mA
LINE SURGE:	EN 61000-4-5 LEVEL 4
EMI:	COMPLIES WITH EN55022 CLASS B AND FCC PART 15 CLASS B WHEN TESTED WITH A RESISTIVE LOAD, BOTH CONDUCTED AND RADIATED
CE MARK:	TESTED TO COMPLY WITH EN61000-3-2 EN61000-3-3 AND EN50082-1, INCLUDING EN61000-4-2, EN61000-4-3, EN61000-4-4, EN61000-4-5, EN61000-4-6, EN61000-4-11, LEVEL 4. UNIT IS ELIGIBLE FOR CE MARK
C-TICK:	TESTED TO COMPLY W/RADIO TELECOMMUNICATION ACT OF 1992.
EFFICIENCY:	COMPLIES WITH ENERGY STAR TIER 2 (NORTH AMERICA), CECP TIER 2 (CHINA), MEPS TIER 2 (AUSTRALIA), CODE OF CONDUCT (EUROPE)
MTBF:	GREATER THAN 50,000 HOURS AT 25°C AMBIENT TEMPERATURE,
OPERATING TEMPERATURE:	0°C TO 40° C
STORAGE TEMPERATURE:	-40°C TO 80° C
HUMIDITY:	0% TO 90% RELATIVE HUMIDITY
ROHS:	COMPLIES WITH EU 2002/95/EC AND CHINA SJ/T 11363-2006



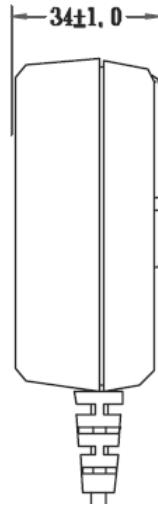
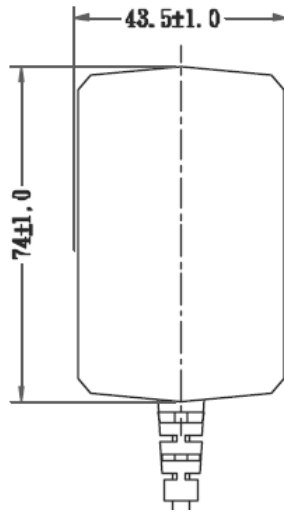
Foot Note: Globtek Inc. will not be liable for the safety and performance of these power supplies if unauthorized access and repair occurs. End user should consult applicable UL, CSA or EN standards for proper installation instructions	DASH NO.	PART NO	REV.	DESCRIPTION	NOTES	
	TABULATION BLOCK					
Limitation of Use: Globtek product are not authorized for use as mission critical components in life support, hazardous environment, nuclear or aircraft applications without prior written approval from the CEO of Globtek Inc.	INIT.BY: SP		DATE: 09/29/04	TOLERANCES: DECIMALS ANGULAR .xx +/- 0.1 +/- 1° .xxx +/- .005	GlobTek, Inc. 186 Veterans Dr. Northvale, NJ 07647 www.globtek.com Tel. 201-784-1000 Fax 201.784.0111	
	DRAWN: NF	DATE: 09/29/04	FSCN No.: G, N	SIZE A		DWG TITLE: WALL PLUG-IN SWITCHING POWER SUPPLY, 15 WATTS, UNIVERSAL INPUT, 5V@ 2.6A
Contents of this document are subject to change without prior notice	APRVD :DMR	DATE: 09/29/04	CAGE CODE: 0GV V90	SCALE: NONE	MODEL NO: GT-41052-1305 (PS-162)	REV. G
					PART NO: GS-850(R)	SHEET 1 OF 5

PROPRIETARY INFORMATION:

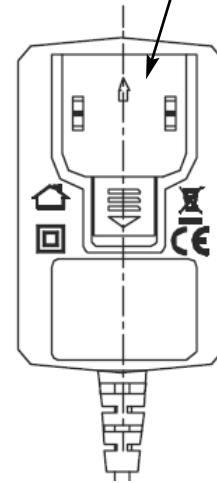
PROPRIETARY OF GLOBTEK, INC. ANY REPRODUCTION, DISCLOSURE OR USE OF THIS DRAWING, IN WHOLE OR IN PART, IS HEREBY PROHIBITED EXCEPT AS SPECIFIED IN WRITING BY GLOBTEK, INC.

3. ENCLOSURE

UPPER HOUSING: HIGH IMPACT PLASTIC, 94V0 POLYCARBONATE, NON-VENTED, COLOR BLACK
 LOWER HOUSING: HIGH IMPACT PLASTIC 94V0 POLYCARBONATE, NON- VENTED, COLOR BLACK
 SIZE: 74 x 43.5 x 34 mm



STANDARD OPTION SHIPS WITHOUT AC PINS INSTALLED



4. INPUT PLUG:

N.A. CONFIGURATION:

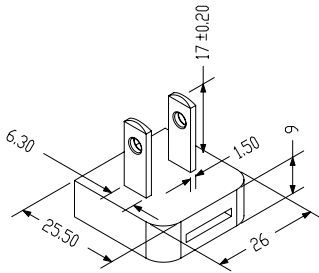
1. CLASS II MODEL NEMA 1-15P PLUG WITH 2 PRONGS
2. AUSTRALIAN CONFIGURATION: SAA 2 BLADES CLASS II
3. UK CONFIGURATION: UK 2 BLADES CLASS II
4. EUROPEAN CONFIGURATION: EUROPLUG 2 PINS, CLASS II

1

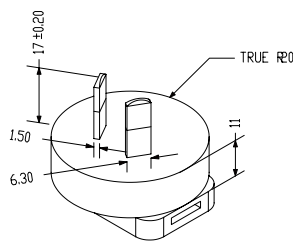
2

3

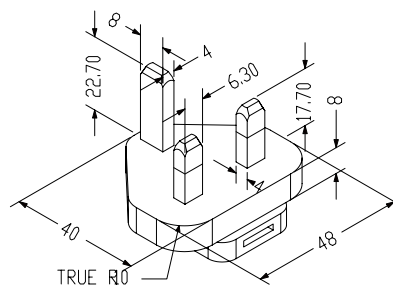
4



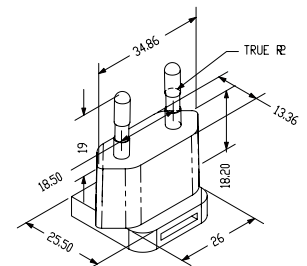
P/N: Q-NA



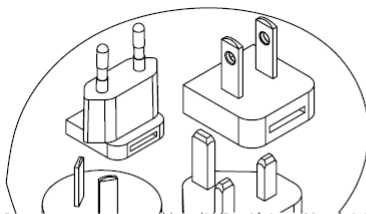
P/N: Q-SAA



P/N: Q-UK



P/N: Q-EU



KIT INCLUDING:

- Q-NA, Q-SAA, Q-UK, Q-EU,
 1 PIECE EACH: Q-KIT

GlobTek, Inc.
 www.globtek.com

186 Veterans Dr. Northvale, NJ 07647
 Tel. 201-784-1000 Fax 201.784.0111

DWG TITLE: WALL PLUG-IN SWITCHING POWER SUPPLY, 15 WATTS, UNIVERSAL INPUT, 5V@ 2.6A

MODEL NO: GT-41052-1305 (PS-162)

REV.
 G

PART NO: GS-850(R)

SHEET 2 OF 5

PROPRIETARY INFORMATION:

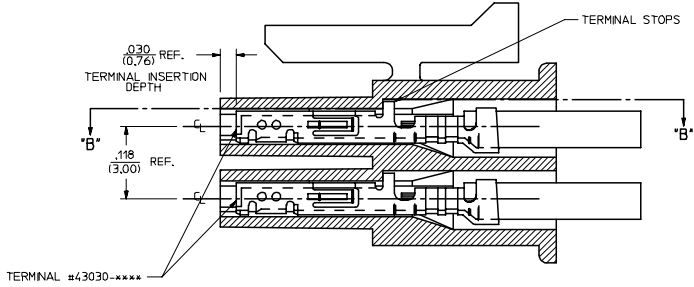
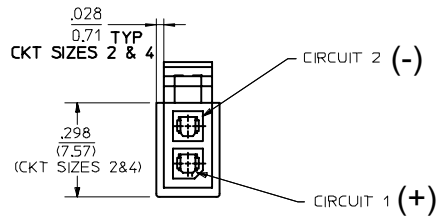
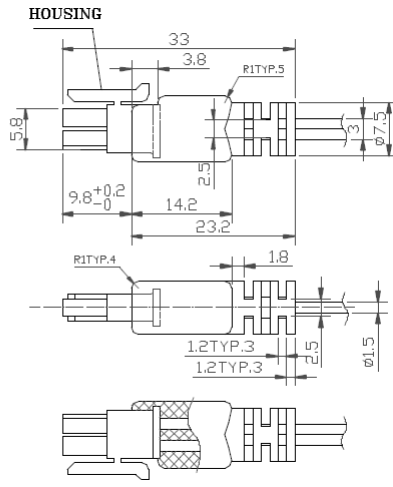
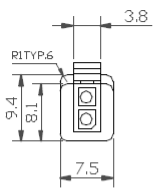
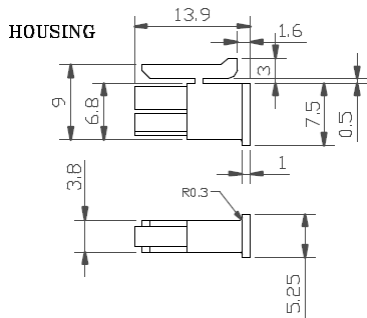
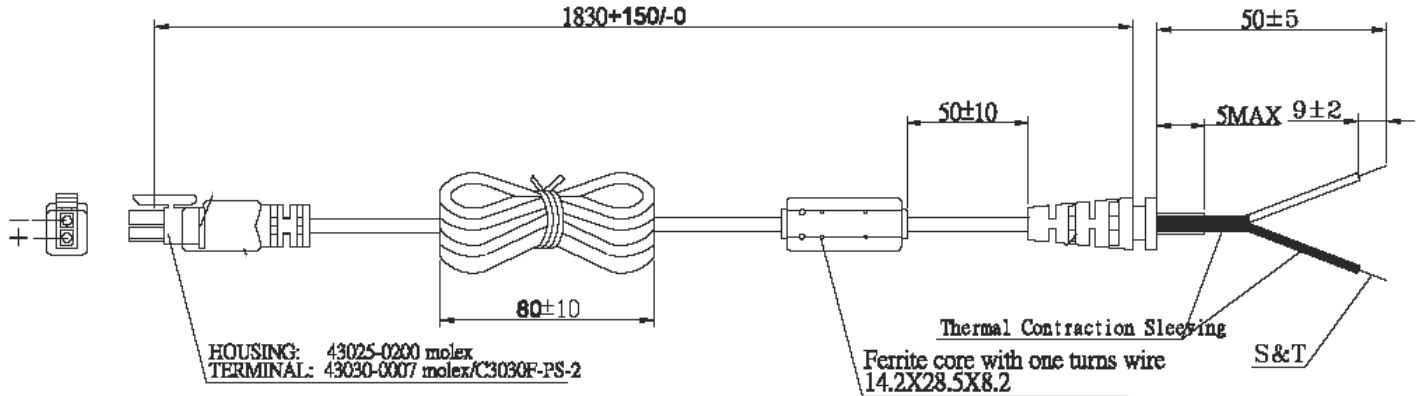
PROPRIETARY OF GLOBTEK, INC. ANY REPRODUCTION, DISCLOSURE OR USE OF THIS DRAWING, IN WHOLE OR IN PART, IS HEREBY PROHIBITED EXCEPT AS SPECIFIED IN WRITING BY GLOBTEK, INC.

5. OUTPUT CORD:

1 CONDUCTOR + SHIELD, 18 AWG STRANDED WIRE, ROUND # 1185, COLOR BLACK, LENGTH (L) OF CORD: 1830 +150, -0 mm.
 CORD IS MEASURED FROM THE HOUSING TO THE END OF OVERMOLD OF THE CONNECTOR.
 CABLE IS TO BE MARKED WITH WIRE GAUGE, AND ALL APPLICABLE RATING AND SAFETY APPROVALS.
 CABLE HAS MOLDED INLINE FERRITE.

6. OUTPUT CONNECTOR:

MOLEX 2 PIN, P/N: 43025-0200 (HOUSING), 43030-0007 (TERMINAL) OR EQUIVALENT, PINOUT: 1(+), 2(-)



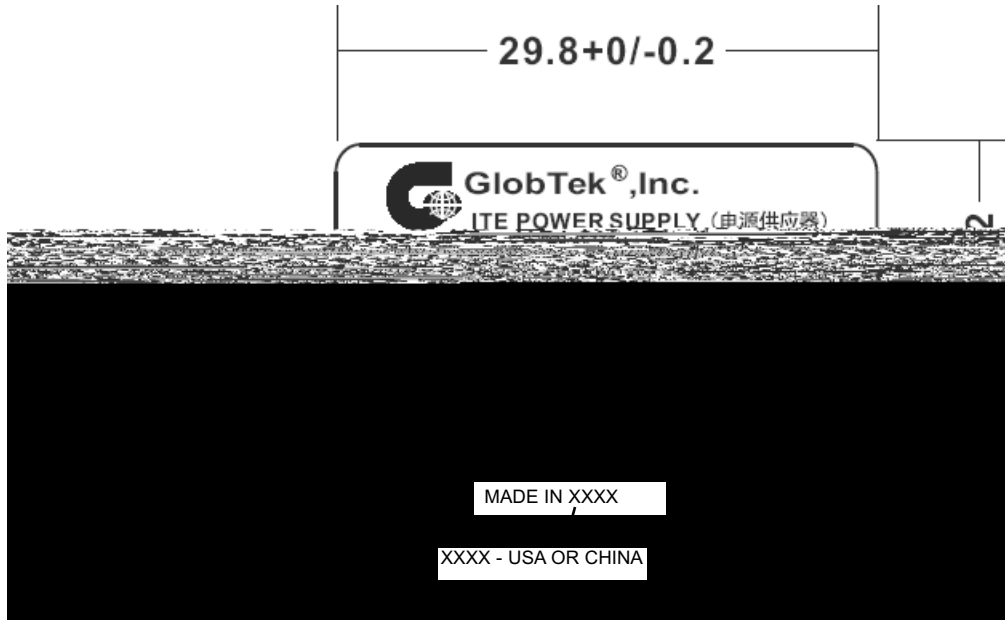
		186 Veterans Dr. Northvale, NJ 07647 Tel. 201-784-1000 Fax 201.784.0111
www.globtek.com		
DWG TITLE: WALL PLUG-IN SWITCHING POWER SUPPLY, 15 WATTS, UNIVERSAL INPUT, 5V@ 2.6A		
MODEL NO: GT-41052-1305 (PS-162)	REV. G	
PART NO: GS-850(R)	SHEET 3 OF 5	

PROPRIETARY INFORMATION:

PROPRIETARY OF GLOBTEK, INC. ANY REPRODUCTION, DISCLOSURE OR USE OF THIS DRAWING, IN WHOLE OR IN PART, IS HEREBY PROHIBITED EXCEPT AS SPECIFIED IN WRITING BY GLOBTEK, INC.

7. LABEL:

MATERIAL: .007 (0.18) THICK FLAT THERMAL TRANSFER, IMPRINTABLE, WHITE OR SILVER POLYESTER SHEET WITH BLACK NOMENCLATURE.
MANUFACTURER: STEVEN LABEL, MATERIAL I.D. NO.3302-33, UL FILE NO. MH12821(N), UL MATERIAL DESIGNATION FILE NO. GHW332RL.
OPTIONAL LABEL MATERIAL CAN BE SUBSTITUTED PROVIDING MATERIAL IS UL LISTED AND COMPLIES WITH APPLICABLE SAFETY

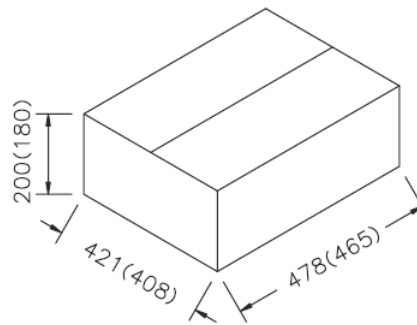
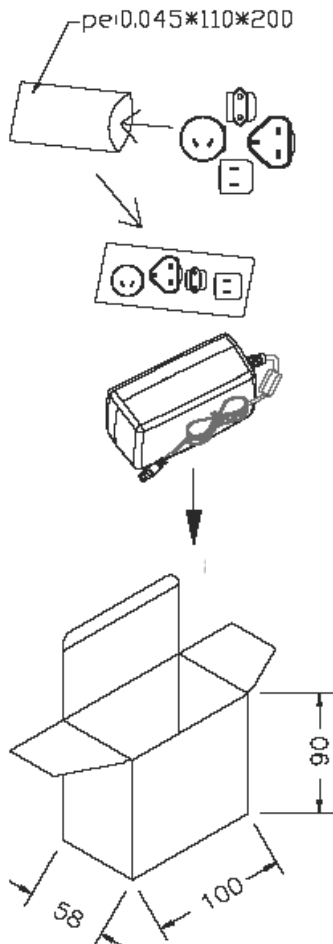



8. PACKING

CARTON SIZE: 478 x 421 x 200 mm

Q'TY: 60 PCS (20*3)

GIFT BOX: 100 x 58 x 90 (CRITICAL)



 GlobTek®, Inc.		186 Veterans Dr. Northvale, NJ 07647
www.globtek.com		Tel. 201-784-1000 Fax 201.784.0111
DWG TITLE: WALL PLUG-IN SWITCHING POWER SUPPLY, 15 WATTS, UNIVERSAL INPUT, 5V@ 2.6A		
MODEL NO: GT-41052-1305 (PS-162)		REV. G
PART NO: GS-850(R)		SHEET 4 OF 5

PROPRIETARY INFORMATION:


PROPRIETARY OF GLOBTEK, INC. ANY REPRODUCTION, DISCLOSURE OR USE OF THIS DRAWING, IN WHOLE OR IN PART, IS HEREBY PROHIBITED EXCEPT AS SPECIFIED IN WRITING BY GLOBTEK, INC.

China RoHS SELF DISCLOSURE TABLE

有毒有害物質或元素名稱及含量標識格式						
Name and concentration of hazardous substance or element in product						
部件名稱 Name of part	有毒有害物質或元素 Hazardous substance or element					
	鉛 (Pb)	汞 (Hg)	鎘 (Cd)	六價鉻 (Cr (VI))	多環芳烴 (PBB)	多溴二苯醚 (PBDE)
二極體 DIODE (DF)	X	O	O	O	O	O
二極體 DIODE (ITO-220AB)	X	O	O	O	O	O
SMD 電阻 SMD RESISTOR	X	O	O	O	O	O
SMD 二極體 SMD DIODE	X	O	O	O	O	O
直流輸出擦插头 PLUG	X	O	O	O	O	O

O: 表示該有毒有害物質在該附件所有均質材料中的含量均在SJ/T 11363-2006規定的限量要求以下。
O: refers to the concentration of this hazard substance in the all homogenous materials in this part is below the concentration limit as stipulated in the standard SJ/T 11363-2006.

X: 表示該有毒有害物質至少在該附件的某一均質材料中的含量超出 SJ/T 11363-2006規定的限量要求
X: refers to the concentration of this hazard substance at least in a homogenous material is higher than the concentration limit as stipulated in the standard SJ/T 11363-2006.

 GlobTek, Inc. www.globtek.com	186 Veterans Dr. Northvale, NJ 07647 Tel. 201-784-1000 Fax 201.784.0111
	DWG TITLE: WALL PLUG-IN SWITCHING POWER SUPPLY, 15 WATTS, UNIVERSAL INPUT, 5V@ 2.6A
MODEL NO: GT-41052-1305 (PS-162)	REV. G
PART NO: GS-850(R)	SHEET 5 OF 5